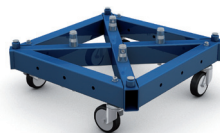
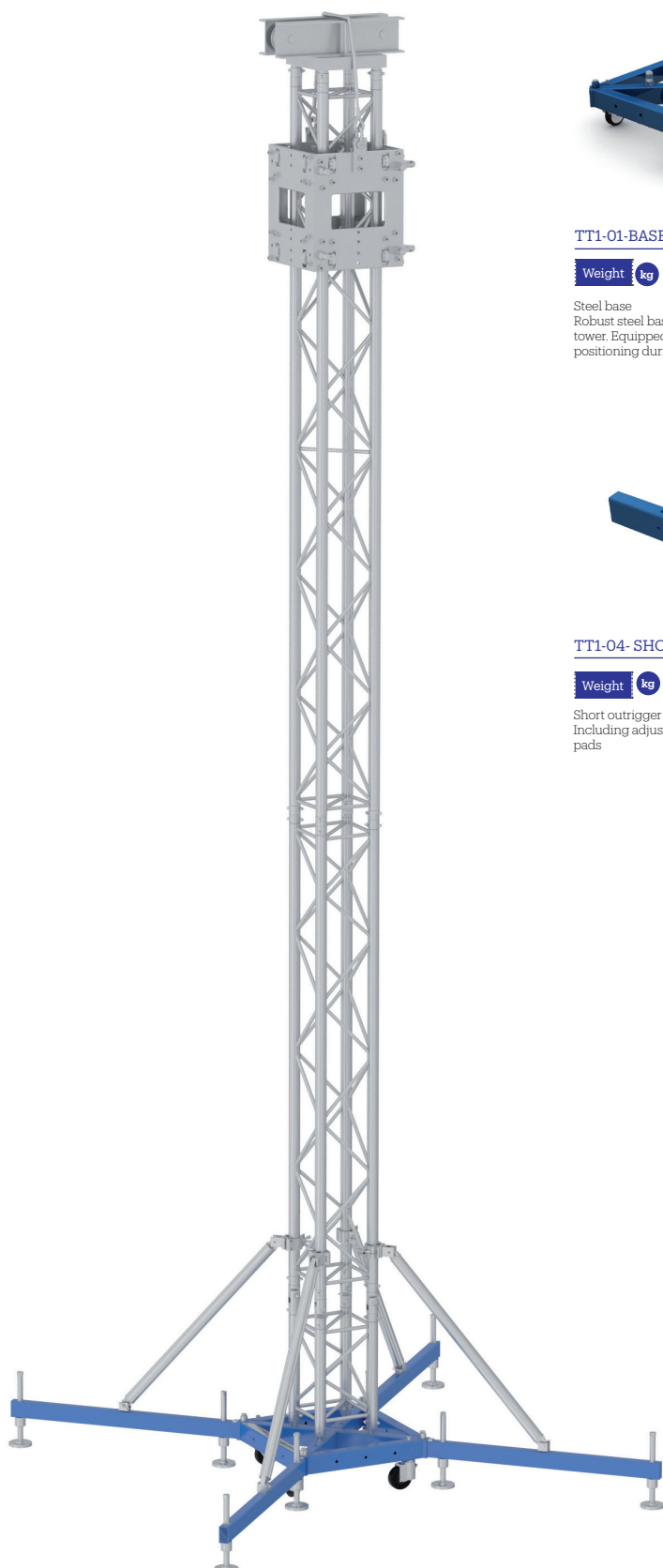


Thomas Tower - TT1

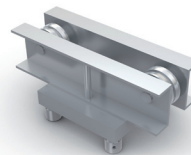
- Compact, heavy-duty JT30 series tower system
- 7.5m (24.60 ft) max height
- For use independently or within roof systems
- Sleeve block designed for use with JT30&JT40H trusses
- Operate with manual chain hoist or electric chain hoist (bracket required)
- Reinforced head section with built-in feature for dead-hanging
- Guy wire connection points via bolt-on hangers
- Short or long outriggers (incl. stabilising brace) available
- Adjustable base feet with rubber pads for optimal friction



TT1-01-BASE

Weight **kg** **lbs** **33.00** (72.66)

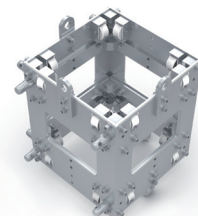
Steel base
Robust steel base gives stability to the tower. Equipped with wheels for easy positioning during setup.



TT1-02-HEAD SECTION

Weight **kg** **lbs** **13.00** (28.65)

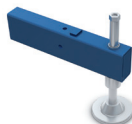
Head section for chain
Fitted with steel pulleys for 7 - 8mm (0.28 - 0.31") chain
Alternative dimensions available after consultation



TT1-03-SLEEVE

Weight **kg** **lbs** **46.00** (101.29)

Sleeve block
Consists of 10mm (0.39") al. plates connected with steel components. Can be attached to JT30 & JT40H



TT1-04-SHORT OUTRIGGER

Weight **kg** **lbs** **5.00** (11.02)

Short outrigger
Including adjustable spindles, rubber pads



TT1-05-LONG OUTRIGGER

Weight **kg** **lbs** **16.00** (35.23)

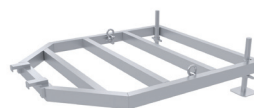
Long outrigger
1.2m (3.94") long, including adjustable spindles, rubber pads



TT1-07-HINGES

Weight **kg** **lbs** **2.40** (5.28)

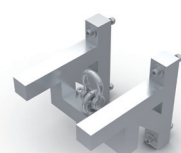
Hinges
Used to connect the vertical tower pieces and to allow for tilt-up assembly. set of 4pcs



TT1-01-BALAST BASE

Weight **kg** **lbs** **29.00** (64.00)

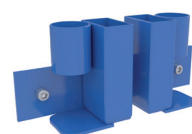
Designed to stack flat with smooth sides. Integrated guy wire points. Max. load: 2000 kg (4409 lbs)



TT1-09-BRACKET FOR MOTOR

Weight **kg** **lbs** **6.00** (13.21)

Bracket for chain hoist
Used for electric chain hoist attachment to sleeve block to achieve max. loading



TT1-OUTRIGGER HOLDER

Weight **kg** **lbs** **4.60** (20.00)

Designed to secure outriggers to the steel base for easy transport and storage.

