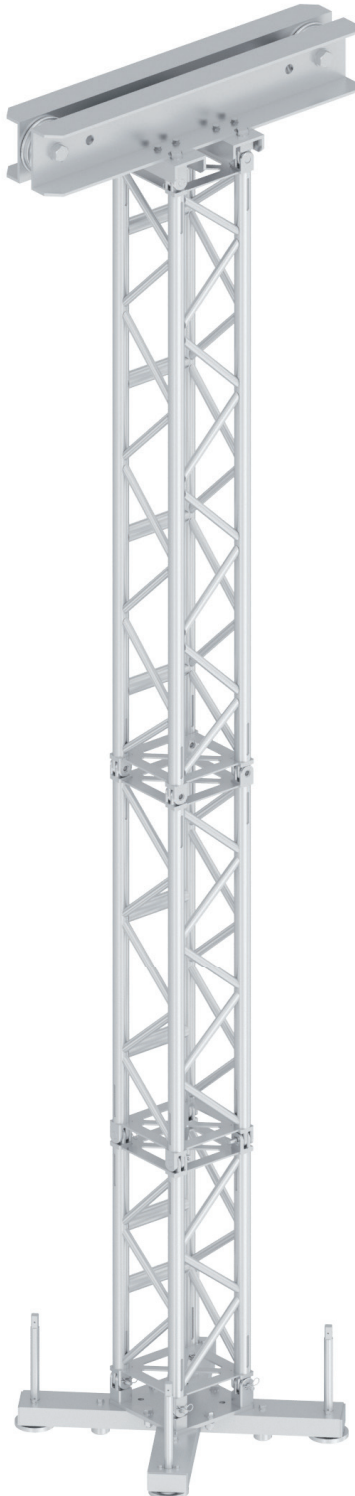


Thomas Tower - TT4

- 30.5cm square ground support tower
- Serves as lifting medium for a variety of JTE truss (from 52 x 52 cm, heavy-duty, Supertruss and Pre-rig truss to Roof Systems)
- Fork connections for fast assembly and higher load ratings than bolted towers
- Provides support for truss rigs where flying points are not strong enough or in the wrong place
- Each tower can lift up to 4 tons (incl. self weight of truss rig and motors) to a height of 12 metres
- Raises and lowers truss rig via an electric hoist rigged into the truss in double fall operation (passing over roller beam at top of tower and connected to other side of sleeve block)
- 50 x 4 mm main chords
- 25 x 3 mm diagonals
- Tower sections are pinned together to allow for 76 cm increments in height to a maximum height of 12 metres
- Made from 6082-T6 aluminium



Code	Old code	Description
TT4-01-BASE	JT B5300A	Base with vertical connecting forks
TT4-02-HEAD	JT B5302-B	Roller beam with vertical connecting forks
TT4-03-SLEEVE	JTB1309A	Tower sleeve plate
TT4-05-LEG-LONG	JT B4003	Foot outrigger l=2m
TT4-07-HINGE	JT B5301	Hinge section l=2m
TT4-11-LOWER SAFETY BLOCK	JT B4120A	Sleeve block tower mount safety system
TT4-12-UPPER SAFETY BLOCK	JT B4120B	Sleeve block mount safety system

4ST30T-L500	-	0.5m tower section
4ST30T-L1000	JT B5310	1m tower section
4ST30T-L1500	JT B5315	1.5m tower section
4ST30T-L2000	JT B5320	2m tower section
4ST30T-L2500	JT B5325	2.5m tower section
4ST30T-L3000	JT B5330	3m tower section



TT4-02-HEAD



TT4-03-SLEEVE



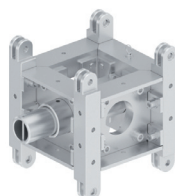
TT4-01-BASE



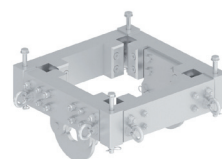
TT4-05-LEG-LONG



TT4-07-HINGE



TT4-11-LOWER
SAFETY BLOCK



TT4-12-UPPER
SAFETY BLOCK